

YASHICA

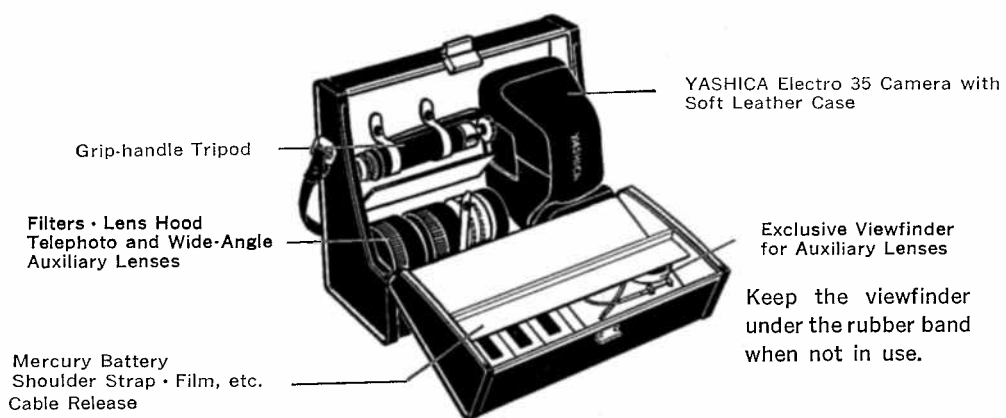
ELECTRO 35

INSTRUCTION BOOKLET

35
KIT

THE CARRYING CASE

DESCRIPTION OF CONTENTS



The YASHICA Electro 35 with the grip-handle tripod can be accommodated in the carrying case.

The carrying case provides space for accommodating the following items:

- YASHICA Electro 35 with soft leather case
- Telephoto and wide-angle lenses
- Exclusive viewfinder for auxiliary lenses
- Grip-handle tripod
- Filters (2) and lens hood
- Cable release
- Mercury battery (5.6V)
- Shoulder strap, film, silicone cloth, etc.



TELEPHOTO AND WIDE-ANGLE AUXILIARY LENSES

- Telephoto Auxiliary Lens
- Focal length: 58.4 mm (in combination with the camera lens);
ratio of magnification 1.3X.
Lens composition: Three elements in three groups
Angle of view: 40° 29' (in combination with the camera lens)
Mount: 55 mm screw-thread mount
Others: Distance conversion scale, exclusive viewfinder (for both
the telephoto and wide-angle auxiliary lenses), 72 mm
screw-in type filter mount, accepts 74 mm slip-on type lens
hood. No exposure compensation is necessary.



- Wide-Angle Auxiliary Lens
- Focal length: 37.7 mm (in combination with the camera lens);
ratio of magnification 0.8X.
Lens composition: Two elements in two groups
Mount: 55 mm screw-thread mount
Others: Distance conversion scale, exclusive viewfinder (for both
the telephoto and wide-angle auxiliary lenses), 72 mm
screw-in type filter mount, accepts 74 mm slip-on type lens
hood. No exposure compensation is necessary.





THE EXCLUSIVE VIEWFINDER

The exclusive viewfinder to be used together with the auxiliary lens features two brilliant trimming frames outlining the field covered by the telephoto and wide-angle auxiliary lenses, respectively.

In case the auxiliary lens is mounted over the camera lens, do not sight through the camera viewfinder when tripping the shutter.

Mount either the telephoto or wide-angle auxiliary lens on the filter mount of the camera lens.

Slip the exclusive viewfinder into the accessory shoe of the camera.



WIDE-ANGLE

TELEPHOTO

FOCUS ADJUSTMENT (when telephoto or wide-angle lens is mounted on the camera lens)

Because the use of the telephoto or wide-angle auxiliary lens changes the focal length of the camera lens, the camera-to-subject distance setting must be adjusted accordingly. Refer to the distance conversion scale of the auxiliary lens in use, each time the camera-to-subject distance setting is to be adjusted.

In the event of the position of the distance conversion scale coming under the lens barrel (when the auxiliary lens is mounted), unscrew the locking screw and re-adjust the conversion scale to any of the three positions provided, on the auxiliary lens barrel.



① Sight through the camera viewfinder and turn the focusing ring until the two images in the rhomb are superimposed perfectly.

② Read the camera-to-subject distance on the focusing ring of the camera.

Example When using the telephoto auxiliary lens, make the following adjustment. (The same procedure is applicable when using the wide-angle auxiliary lens.)

② In case the focusing ring on the camera shows 3 meters when focus is secured with the aid of the camera range-finder...



3 Read the corresponding camera-to-subject distance on the distance conversion scale of the auxiliary lens. The red figures opposite it indicate the distance to which the focusing ring on the camera should be adjusted.

4 Then, re-adjust the focusing ring on the camera accordingly.

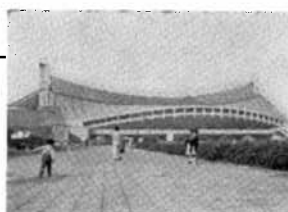
5 Refer to 3 meters on the conversion scale of the auxiliary lens, and the reading is "3-2", signifying focusing ring of the camera should be adjusted to 2 meters.

6 Adjust the focusing ring of camera to 2 meters.

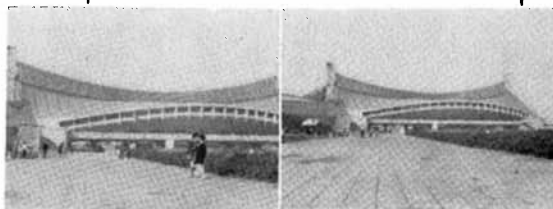
Exposure compensation is unnecessary with the auxiliary lens. Review on exposure warning arrows or lamps. Red arrow or lamp—warns against over-exposure and signals for exposure correction by turning the Aperture Ring. Yellow arrow or lamp—indicates the exposure is slower than 1/30 sec. and the use of the Yashica Grip/Tripod ST-7 is recommended. When no arrows or lamps light mean hand-held photography is permitted.

• Notes on Use of Telephoto and Wide-Angle Auxiliary Lenses.

1. When using the telephoto or wide-angle auxiliary lens, it is advisable to set the lens aperture at $f/5.6$, $f/8$ or $f/11$. Under certain conditions, good results may not be obtained at aperture settings of $f/1.7$, $f/2$ or $f/16$.
2. The telephoto or wide-angle auxiliary lens cannot be mounted over the camera lens unless the 55mm filter is removed.
3. A 72mm filter can be mounted on the front element of the telephoto or wide-angle auxiliary lens. However, the use of a filter should be avoided as much as possible, because the edges of the picture area may be blacked out under certain conditions.



Standard Lens



Telephoto Lens

Wide-angle Lens

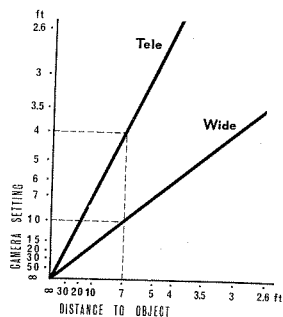
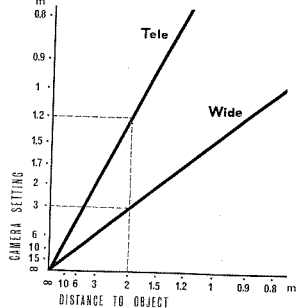
DISTANCE CONVERSION TABLE

The adjustment for camera-to-subject distance can be made most readily by reading off the figure on the conversion scale of the auxiliary lens. For more details, refer to the following conversion table.

How to Read the Conversion Table

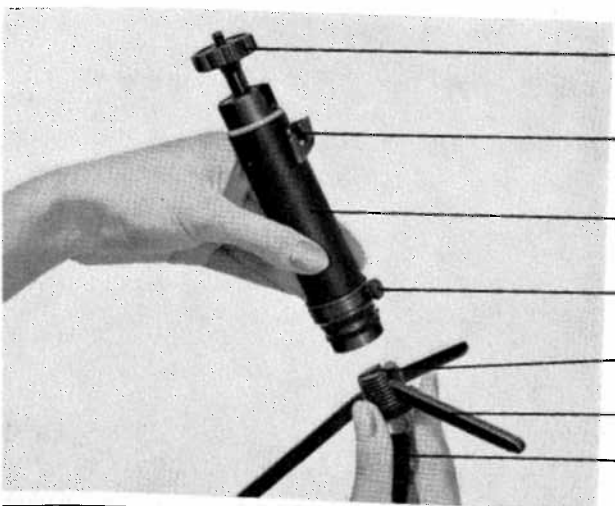
If, for instance, the camera-to-subject distance measured with the camera rangefinder is 2 meters, draw a line vertically from 2 meters on the camera to subject distance scale to intersect the respective wide or tele diagonal lines, and extend the line horizontally from point of intersection to the camera setting scale (see diagram below).

This will show that, if the distance measured with the rangefinder of the camera is 2 meters, the distance scale of the camera should be readjusted to 1.2 meters when using the telephoto auxiliary lens, and to 2.5 meters when the wide-angle auxiliary lens is mounted on the camera lens.



GRIP-HANDLE TRIPOD

The YASHICA Electro 35 offers the advantage of fully automatic adjustment for long exposures under subdued light conditions. The grip-handle tripod permits steady hold of the camera, for picture-taking under such conditions. It features a handy ball socket head to set the camera at the desired position.

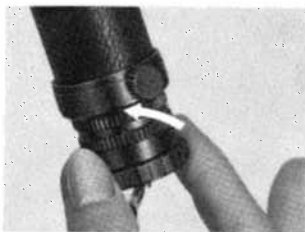


- ① Camera mounting thumbscrew and Ball socket
- ② Fixing screw
- ③ Grip-handle
- ④ Grip adjustment screw
- ⑤ Base knob
- ⑥ Foldable tripod legs
- ⑦ Wrist strap

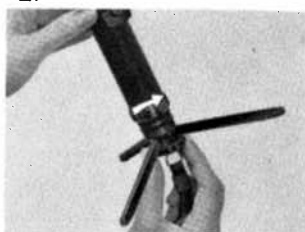
HOW TO USE THE TRIPOD



1.



2.



1. Turn the base knob in the direction of the arrow and draw out the folded tripod legs.
2. Spread out tripod legs and mount the base knob by turning it in the direction of the arrow.

VARIED USES OF THE GRIP-HANDLE TRIPOD



- As a camera Grip for hand-held photography
- As a Tripod (on a flat surface)



- As a Tripod (used against a wall)



- As a Tripod (using the chest as a support)

FILTERS AND LENS HOOD



Supplied in the carrying case are filters and lens hood made exclusively for use with the YASHICA Electro 35. (Both the filters and lens hood cannot be mounted on the camera lens when the auxiliary lens is in use.)

- Filters (55 mm screw-in type)

1A filter for color and B & W photography. This filter has a filter factor of 1 which requires no exposure compensation. It reduces excess blue and adds warmth to the picture. This filter used at all times will protect the camera lens from scratches and other damages.

Y2 filter for B & W photography only.

This filter has a filter factor of 2 and absorbs not only ultra-violet rays but also rays of the red spectrum and is therefore effective in assuring crisp results in photographing landscapes, seaside or snow scenes, etc. (Do not use this filter when a color film is loaded in your YASHICA Electro 35.) Exposure should be doubled.

Example: With ASA 100 film, set ASA control dial at ASA50.

- Lens Hood (57 mm slip-on type)

The use of the lens hood to ward off extraneous light assures best results when shooting landscapes, seaside scenes, etc.

CABLE RELEASE

The cable release is used when hand-held photography must be avoided (in case of slow shutter speeds) or when making bulb (B) exposures. Mount the camera on a tripod and fix the cable release to the threaded socket on the shutter release button.

- When going on long trips, it is advisable to take along a spare mercury battery which supplies power to operate the YASHICA Electro 35.
- As battery replacement, use Mallory TR-164 5.6V Eveready E-164 5.6V or equivalent battery.

 **YASHICA CO., LTD.**
27-8, 6-chome, Jingumae, Shibuya-ku, Tokyo, Japan

Printed in Japan